

Small cardamom (Elettaria cardamomum Maton.) and ginger (Zingiber officinale Roxb) bacterial wilt is caused by same strain of Ralstonia solanacearum: a result revealed by multilocus sequence typing

(A. K. S. Kumar, T. P. Prameela, R. Suseela Bhai, A. Siljo, C. N. Biju, M. Anandaraj & B. A. Vinatzer

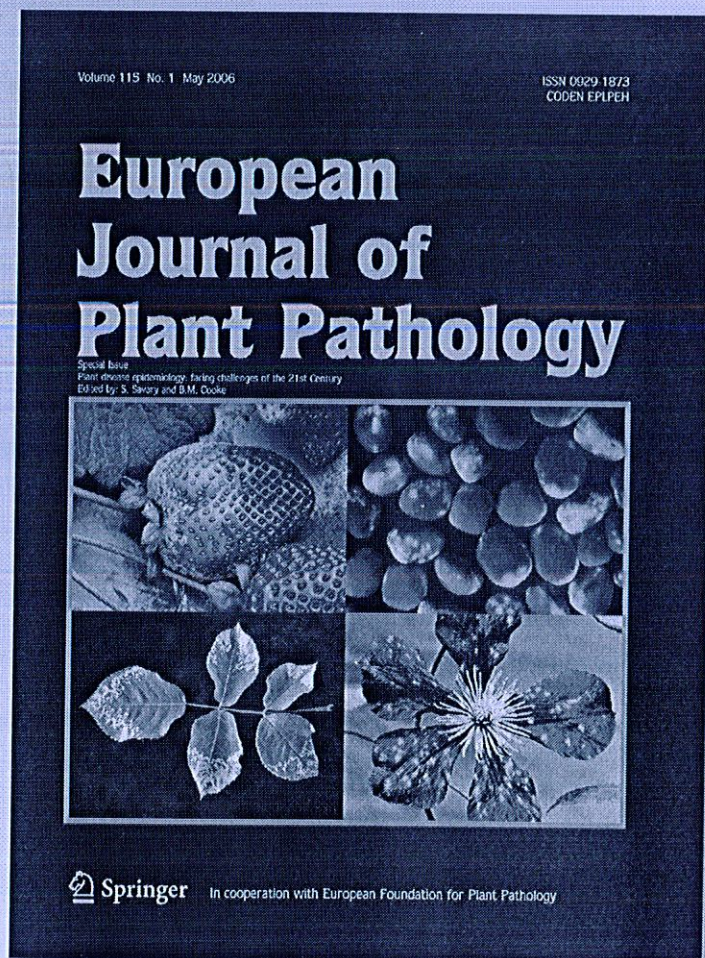
European Journal of Plant Pathology

Published in cooperation with the
European Foundation for Plant
Pathology

ISSN 0929-1873

Eur J Plant Pathol

DOI 10.1007/s10658-011-9903-2



Your article is protected by copyright and all rights are held exclusively by KNPV. This e-offprint is for personal use only and shall not be self-archived in electronic repositories. If you wish to self-archive your work, please use the accepted author's version for posting to your own website or your institution's repository. You may further deposit the accepted author's version on a funder's repository at a funder's request, provided it is not made publicly available until 12 months after publication.

Small cardamom (*Elettaria cardamomum* Maton.) and ginger (*Zingiber officinale* Roxb) bacterial wilt is caused by same strain of *Ralstonia solanacearum*: a result revealed by multilocus sequence typing (MLST)

A. Kumar · T. P. Prameela · R. Suseela Bhai ·
A. Siljo · C. N. Biju · M. Anandaraj ·
B. A. Vinatzer

Accepted: 9 November 2011
© KNPV 2011

Abstract Bacterial wilt in cardamom (*Elettaria cardamomum* Maton) was observed in Kerala state of India. Infected plants showed wilting wherein all leaves roll or curl upward towards the midrib centre, turn yellow, and the whole plant finally dies; the collar region shows water-soaked lesions initially and turns dark brown eventually; copious quantity of bacterial exudate is observed on the cut end of the pseudostem. The bacterium was identified as *Ralstonia solanacearum*

based on a panel of phenotypic characters such as fluidal white colony on Kelman's medium, biovar assay and biolog assay (BiologGN), and genotypic characters such as Multiplex-PCR based phylotyping, sequences of *16S rDNA*, *16-23S* intergenic region, and *recN* gene. Collectively these tests revealed that the *R. solanacearum* infecting cardamom belong to biovar 3 and phylotype 1 confirming its Asian origin. Upon soil inoculation, the bacterium caused typical wilting of the cardamom plants in three weeks and ginger plantlets in two weeks. Cross transmissibility of the bacterium was observed in cardamom and ginger wherein the plants succumbed to wilt when *R. solanacearum* from either of the host was inoculated. BOX-PCR fingerprinting revealed that the strain is identical (100%) to a ginger strain of *R. solanacearum*, which is widely prevalent in the Indian sub-continent. Furthermore, Multilocus Sequence Typing (MLST) based strain comparison confirmed that cardamom and ginger strain were identical to each other at 11 loci. Apart from striking phenotypic and genotypic (allelic) similarities, geographical origin, and cross transmissibility of the cardamom strain of *R. solanacearum* strongly suggest that the new occurrence of wilt of cardamom in India could have an origin in bacterial wilt of ginger. Perusal of records on *Ralstonia*-induced bacterial wilt in crop plants, particularly among the Zingiberaceae family, reveals that this is a new report of bacterial wilt disease in small cardamom.

Electronic supplementary material The online version of this article (doi:10.1007/s10658-011-9903-2) contains supplementary material, which is available to authorized users.

A. Kumar (✉)
Division of Plant Pathology,
Indian Agricultural Research Institute,
New Delhi 110 012, India
e-mail: kumar@iari.res.in

T. P. Prameela · R. S. Bhai · A. Siljo · M. Anandaraj
Division of Crop Protection, Indian Institute of Spices
Research,
Calicut, 673012 Kerala, India

C. N. Biju
Cardamom Research Center,
Indian Institute of Spices Research,
Appangala, 571201 Karnataka, India

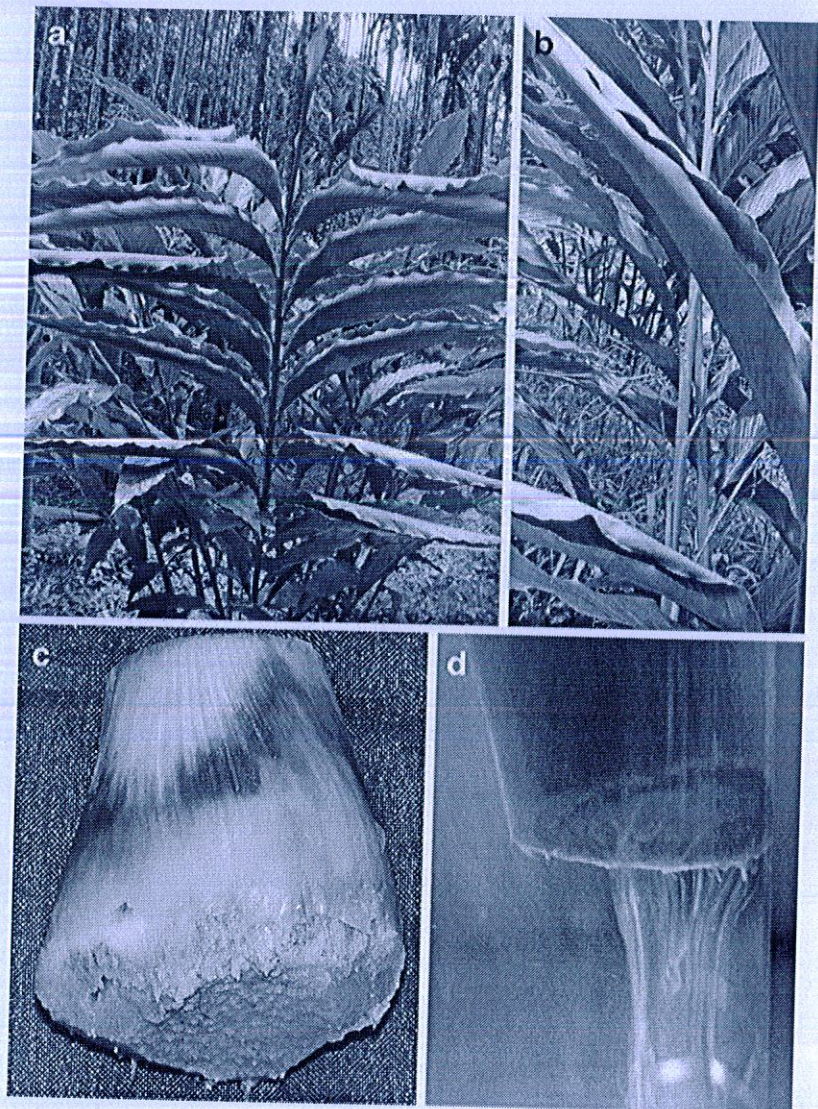
B. A. Vinatzer
551 Latham Hall (0390) Virginia Tech,
Blacksburg, VA 24061, USA

Keywords eBurst · Ginger · *recN* · Phylotyping · Solanaceae · Zingiberaceae

Cardamom is one of the important spice crops cultivated in India, Guatemala, Tanzania, Sri Lanka, El Salvador, Vietnam, Laos and Cambodia. Cardamom plants expressing unusual wilt symptoms were observed in the Wayanad district of the state Kerala in South India in June 2010 (Fig. 1a). The symptoms are those of a typical vascular wilt wherein all the leaves of the plant rolled or curled inward (Fig. 1b) and turned golden yellow starting from the lower leaves; the collar region of the plants showed water soaked dark brown lesions (Fig. 1c). This kind of wilting symptoms had not been reported in small cardamom plantations under natural conditions. Copious quantities

of bacterial exudate could be observed on the cut end of the stem and the same could stream out upon contact with water (Fig. 1d). The bacterial exudates obtained from the wilt-affected cardamom plant were characterized by a panel of biological, phenotypic and genotypic methods. The identity of the bacterium was further confirmed as *R. solanacearum* (99.9% probability) by a Biolog-based identification scheme (BiologGN plates). Hayward's (1964) biovar testing revealed that the *R. solanacearum* isolated from cardamom belong to Biovar 3. The multiplex PCR-based phylotyping suggested by Fegan and Prior (2005) and Opina et al. (1997) revealed that the cardamom strain of *R. solanacearum* and the ginger strain belong to phylotype 1 confirming their Asian origin (data not shown). The identity of strain was further confirmed by

Fig. 1 a Natural occurrence of bacterial wilt in 4 years old cardamom plants. b Typical upward curling of leaves in the wilted plants. c Dark brown lesion on the base of the plants. d Bacterial streaming from the cut end of stem



comparing the sequences of rRNA (Taghavi et al. 1996; Poussier et al. 2000) and *recN* gene. 1,465 bp of 16S rDNA (**GenBank Accession: JF523189**), 1,303 bp of 16-23S rDNA (**GenBank Accession: JF523188**) and 1,169 bp of *recN* (**GenBank Accession: JF523198**) were used for blast analysis (Altschul et al. 1997). The strain from cardamom displayed 100% similarity for 16S rDNA with the fully sequenced genome of *R. solanacearum* GMI1000 (Biovar 3 strain from tomato), and 99% similarity with five other strains whose full genome is published. For 16-23S and *recN* sequences, the strains displayed 99% identity with the fully sequenced genome of GMI1000. For *recN* based identification, primers (*RecN3F*: gatttcgcatcgccatgc, *RecN5R*: atcaccgatcgctagge) were designed from the genome of *R. solanacearum* GMI1000 by Primer3plus (<http://www.bioinformatics.nl/cgi-bin/primer3plus/primer3plus.cgi>) and validated *in silico* in oligocalculator (<http://www.basic.northwestern.edu/biotools/oligocalc.html>) prior to use.

The reaction mixture (50 μ l) contained template DNA 100 ng; 1 \times PCR buffer; MgCl₂ 1.5 mM; each dNTP 200 μ M; DMSO 6%; primers 10 pmoles and *Taq* DNA polymerase 1 unit. PCR was preceded by a denaturation at 96°C/9 min, followed 30 cycles at 95°C/1 min, annealing temperature at 60°C/1 min and extension temperature of 72°C/2 min with a final extension step of 72°C/10 min. PCR amplicon was purified and sequenced from both ends. Sequences were assembled using Vector NTi (Invitrogen) software package and were subjected to analysis.

Pathogenicity of isolates was determined on 4-month-old cardamom plantlets (Cultivar: *IISR-Suvasini*) and ginger plantlets (Cultivar: *Himachal*) by soil inoculation method by pouring 100 ml of *R. solanacearum* suspension ($\sim 1 \times 10^8$ CFU/ml sterile deionized water) around the collar region of each transplant. The cardamom plantlets showed wilting of plants 3 weeks post inoculation wherein leaves showed upward curling toward the midrib centre (Fig. 2), turned yellow, and the plant eventually died. The strain obtained from cardamom could wilt cardamom plantlets in 21–24 days and ginger plants in 10–12 days post inoculation. Strains of *R. solanacearum* that cause rapid wilting in ginger has been reported in India (Kumar and Sarma 2004, Kumar et al. 2004). Interestingly, cardamom plantlets succumbed to wilt three weeks post inoculation with the *R. solanacearum* strain isolated from naturally



Fig. 2 Typical upward curling of leaves upon pathogen inoculation

infected ginger (GRs-Tms) indicating functional similarity of the strains obtained from either host. However, upward curling of leaf margins in wilted cardamom plantlets and the slow spread in wild were opposite to the symptoms of ginger bacterial wilt which showed downward curling of leaves and spread fast in the field, often termed “ginger blast”.

R. solanacearum isolated from cardamom was compared with three other strains causing bacterial wilt of ginger, paprika (CRs-Per) and potato (PRs-Pun) by BOX-PCR (Rademaker et al. 1997) and Multilocus Sequence Typing (MLST) based on conserved gene sequences. Box-PCR profiles were converted into a binary matrix of presence/absence of each amplicon assuming that the amplicons with identical molecular size in different individuals were homologous. The data was used to construct a Unweighted Pair Group Method with Arithmetic Mean (UPGMA) dendrogram using FreeTree software (Pavlicek et al. 1999) and a similarity coefficient was calculated (Table 1). *R. solanacearum* from cardamom shared all the BOX-PCR amplicons with the ginger strain indicating the close similarity among *R. solanacearum* infecting

Table 1 Similarity matrix between the isolates of *R. solanacearum* isolated from Cardamom and other strains based on BOX-PCR DNA profiling

	PRs-Pun	CRs-Per	GRs-Tms	CaRs-Mep
Potato: PRs-Pun		0.38095	0.57143	0.57143
Paprika: CRs-Per	0.38095		0.84615	0.84615
Ginger: GRs-Tms	0.57143	0.84615		1.00000
Cardamom: CaRs-Mep	0.57143	0.84615	1.00000	

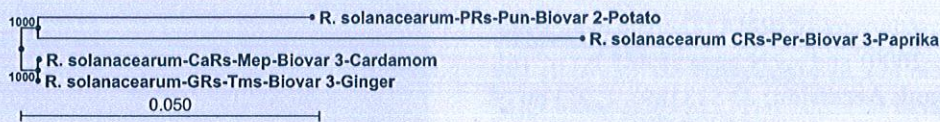


Fig. 3 Tree plot constructed by NJ method using 5,372 bp subjected to 1,000 bootstrap trials showing the relationship of *Ralstonia solanacearum* isolated from cardamom with other

isolates. Strains representing potato (Biovar 2) and paprika (Biovar 3) served as out-groups. Bootstrap values are shown at the nodes

Zingiberaceae family members. We have further genotyped the pathogen by MLST, which exploits sequence data of *ppsA*, *gapA*, *gdhA*, *adk*, *gyrB*, *fliC*, *hrpB*, and *egl* loci (Castillo and Greenberg 2007). A database of alleles (<http://genome.ppws.vt.edu/cgi-bin/MLST/home.pl>) for these loci has been published (Almeida et al. 2010) which was exploited to decipher the probable origin of bacterial wilt of cardamom by assigning allele numbers after sequence analysis. We have adopted the experimental methodology suggested by Castillo and Greenberg (2007) for PCR amplification and sequencing of loci. Sequences were assembled using Vector NTi (Invitrogen) software package and sequences were subjected to two independent analyses. In the first analysis, forward and reverse sequences of the house-keeping and virulence genes from *R. solanacearum* from cardamom, ginger, paprika and potato were assembled and each of the sequences was subjected to blast analysis in <http://genome.ppws.vt.edu/cgi-bin/MLST/home.pl>. The sequences from all eight loci were concatenated

(420 bp+774 bp+873 bp+774 bp+717 bp+318 bp+686 bp+810 bp=5,372 bp) and subjected to multiple alignment. A phylogenetic tree was then constructed using neighbour-joining. The cardamom strain clustered with ginger strain whereas the other two strains formed two independent clades (Fig. 3). We further used the MLST scheme to assign different allele numbers to the sequences at each locus, getting unique allelic profile, called STs. Allele numbers were obtained by sequence comparison with allelic sequences presently contained in the database (Almeida et al. 2010). The isolate from cardamom yielded an identical allelic profile to that of the strain obtained from ginger indicating their close similarity (Table 2). Of the eight alleles, six of them were found to be novel for cardamom and ginger strains of *R. solanacearum*. After allelic profiles or sequence types (ST) were assigned to strains, these ST were compared with the ST of strains presently available in <http://genome.ppws.vt.edu/cgi-bin/MLST/home.pl> using eBurst (<http://eburst.mlst.net>) (Feil et al. 2004, Spratt et al. 2004). The following settings for the

Table 2 Allelic profile of *Ralstonia solanacearum* causing bacterial wilt of cardamom

Loci	GenBank accession number	Allele length (bp)	Host origin of <i>Ralstonia solanacearum</i>			
			Ginger *Strain ID-912	Cardamom Strain ID-911	Paprika Strain ID-916	Potato Strain ID-915
<i>ppsA</i> (Phosphoenol pyruvate synthase)	JF523197	717	10	10	25	2
<i>fliC</i> (Flagellin protein)	JF523192	318	19	19	22	2
<i>hrpB</i> (Regulatory transcription Regulator)	JF523196	810	27	27	28	2
<i>gapA</i> (Glyceraldehyde 3-phosphate dehydrogenase oxidoreductase)	JF523193	774	27	27	25	2
<i>gdhA</i> (Glutamate dehydrogenase Oxidoreductase)	JF523194	774	25	25	27	2
<i>adk</i> (Adenylate kinase)	JF523190	420	1	1	11	2
<i>gyrB</i> (DNA gyrase B)	JF523195	873	26	26	10	2
<i>egl</i> (Endoglucanase precursor)	JF523191	686	25	25	25	2
Concatenated sequence length=5,372 bp						

*For loci, 100% identity, no mismatches, no gaps, and an alignment over the full length of the locus were obtained. Alleles were obtained or assigned after consulting <http://genome.ppws.vt.edu/cgi-bin/MLST/home.pl> as on 19th September 2011 where strain IDs are also available

creation of the eBURST-based snapshot were used: number of loci per isolate, 8; minimum number of identical loci for group definition, 0; minimal single-locus variant count for subgroup definition, 3; and number of re-samplings for bootstrap analysis, 1,000. In an eBurst diagram showing the population of 46 strains of STs of *R. solanacearum*, strain infecting cardamom (Strain ID 911) was clustered with ginger strain (Strain ID 912) indicating their strong association (data not shown).

The identical allelic profile observed for the strains collected in two different time points and geographical & host origin clearly confirms the prevalence of a single virulent lineage of *R. solanacearum* on cardamom and ginger in India. Widespread prevalence of such a virulent lineage of *R. solanacearum* has been attributed to its rhizome transmission across the diverse geographical locations in India (Kumar et al. 2004). Bacterial wilt of Zingiberaceae plants has been reported predominantly in edible ginger-*Zingiber officinale* in India (Kumar and Sarma 2004), Australia (Hayward et al. 1967), China (Ren et al. 1981), Malaysia (Lum 1973), Mauritius (Orian 1953), Philippines (Zehr 1970), Thailand (Titatarn 1986) and in Hawaii (Quinon et al. 1964). Other members of the Zingiberaceae family found to be host for the bacterium includes *Curcuma longa* in Sri Lanka (Velupillai 1986), *Hedychium* in Hawaii (Aragaki and Quinon 1965), *Kaempferia galanga* in China (He 1986), *Zingiber mioga* in Japan (Tsuchiya et al. 2005). Besides these natural incidences, *R. solanacearum* of ginger origin was found to wilt members of the Zingiberaceae such as *Alpinia galanga*, *Curcuma aromatica*, *C. longa*, *C. zedoria*, *Elettaria cardamomum*, *Globba* sp, *Kaempferia galanga*, and *Zingiber zerumbet* (Kumar and Hayward 2005; Kumar et al. 2006). Records on *R. solanacearum*-induced bacterial wilt in crop plants, particularly among the Zingiberaceae family, reveal that this is a new report of bacterial wilt disease in small cardamom. Apart from striking phenotypic and genotypic (allelic) similarities, geographical origin of the disease, the pathogenic behaviour, and cross transmissibility of the cardamom strain of *R. solanacearum* in cardamom and ginger strongly suggest that the new incidence of bacterial wilt of cardamom in India could have origin in bacterial wilt of ginger. Most likely the close proximity of ginger cultivations and cardamom plantations in the Wyanad

district of Kerala, a location where bacterial wilt is endemic, could have enabled the ginger pathogen to infect cardamom in India.

Acknowledgement The project was supported by National network project on *Phytophthora*, *Fusarium* and *Ralstonia* diseases of horticultural and field crops (PhytoFuRa). Various facilities provided by Directors, IISR, Calicut & Director, IARI, New Delhi and Heads, Division of Crop Protection & Division of Plant Pathology, IARI, New Delhi are thankfully acknowledged. We are grateful to Prof. A.C. Hayward, Queensland, Australia for critical comments and suggestion on the manuscript.

References

- Altschul, S. F., Thomas, L. M., Alejandro, A. S., Jinghui, Z., Zheng, Z., Webb, M., et al. (1997). Gapped BLAST and PSI-BLAST: a new generation of protein database search programs. *Nucleic Acids Research*, 25, 3389–3402.
- Almeida, N. F., Yan, S., Cai, R., Clarke, C. R., Morris, C. E., Schaad, N. W., et al. (2010). PAMDB, a multilocus sequence typing and analysis database and website for plant-associated microbes. *Phytopathology*, 100(3), 208–215.
- Aragaki, M., & Quinon, V. L. (1965). Bacterial wilt of ornamental gingers (*Hedychium* spp) caused by *Pseudomonas solanacearum*. *Plant Disease Reporter*, 49, 378–379.
- Castillo, J. A., & Greenberg, J. T. (2007). Evolutionary dynamics of *Ralstonia solanacearum*. *Applied and Environmental Microbiology*, 73, 1225–1238.
- Fegan, M., & Prior, P. (2005). How complex is the *Ralstonia solanacearum* species complex? In C. Allen, P. Prior, & A. C. Hayward (Eds.), *Bacterial wilt disease and the Ralstonia solanacearum species complex* (pp. 449–461). St. Paul: APS Press.
- Feil, E. J., Li, B. C., Aanensen, D. M., Hanage, W. P., & Spratt, B. G. (2004). eBURST: inferring patterns of evolutionary descent among clusters of related bacterial genotypes from multilocus sequence typing data. *Journal of Bacteriology*, 186(5), 1518–1530.
- Hayward, A. C. (1964). Characteristics of *Pseudomonas solanacearum*. *Journal of Applied Bacteriology*, 27, 265–277.
- Hayward, A. C., Moffett, M. L., & Pegg, K. G. (1967). Bacterial wilt of ginger in Queensland. *Queensland Journal of Agriculture & Animal Sciences*, 24, 1–5.
- He, L. Y. (1986). Bacterial wilt in the People's Republic of China. In G. J. Persley (ed.), *Bacterial wilt disease in Asia and the South Pacific*. (pp. 40–48). ACIAR Proceedings ACIAR, Canberra, Australia.
- Kumar, A., & Hayward, A. C. (2005). Bacterial diseases of ginger and their control. In P. N. Ravindran & K. N. Babu (Eds.), *Ginger- the genus Zingiber* (pp. 341–366). USA: CRC Press.
- Kumar, A., & Sarma, Y. R. (2004). Characterization of *Ralstonia solanacearum* causing bacterial wilt of ginger in India. *Indian Phytopathology*, 57, 12–17.

- Kumar, A., Sarma, Y. R., & Anandaraj, M. (2004). Evaluation genetic diversity of *Ralstonia solanacearum* causing bacterial wilt of ginger using Rep-PCR and RFLP-PCR. *Current Science*, 87(11), 1555–1561.
- Kumar, A., Bhai, R. S., Sasikumar, B., Anandaraj, M., & Parthasarathy, V. A. (2006). *Curcuma amada* Roxb. a bacterial wilt evading species in Zingiberaceae: a potential source for valuable genes for bacterial wilt resistance. In G. Saddler, J. Elphinstone, & J. Smith (Eds.), *Abstracts of 4th International Bacterial Wilt Symposium* (p. 85). York: CSL.
- Lum, K. Y. (1973). Cross inoculation studies of *Pseudomonas solanacearum* from ginger. *MARDI Research Bulletin*, 1, 15–21.
- Opina, N., Tavner, F., Holloway, G., Wang, J. F., Li, T. H., Maghirang, R., et al. (1997). A novel method for development of species and strain-specific DNA probes and PCR primers for identifying *Burkholderia solanacearum* (formerly *Pseudomonas solanacearum*). *Asia Pacific Journal of Molecular Biology and Biotechnology*, 5, 19–33.
- Orian, G. (1953). Botanical Division Report, Department of Agriculture, Mauritius, 37–40.
- Pavlicek, A., Hrda, S., & Flegr, J. (1999). FreeTree-Freeware program for construction of phylogenetic trees on the basis of distance data and bootstrap/jackknife analysis of the tree robustness. Application in the RAPD analysis of the genus *Frenkelia*. *Folia Biologica (Praha)*, 45, 97–99.
- Poussier, S., Trigalet-Demery, D., Vandewalle, P., Goffinet, B., Luisetti, J., & Trigalet, A. (2000). Genetic diversity of *Ralstonia solanacearum* as assessed by PCR-RFLP of the *hrp* gene region, AFLP and 16S rRNA sequence analysis, and identification of an African subdivision. *Microbiology*, 146, 1679–1692.
- Quinon, V. L., Aragaki, M., & Ishii, M. (1964). Pathogenicity and serological relationship of three strains of *Pseudomonas solanacearum* in Hawaii. *Phytopathology*, 54, 1096–9.
- Rademaker, J. L. W., Louws, F. J., & de Bruijn, F. J. (1997). Characterization of the diversity of ecologically important microbes by rep-PCR genomic fingerprinting. In A. D. L. Akkermans, J. D. Van Elsas, & J. D. De Bruijn (Eds.), *Molecular microbial ecology manual, supplement 3, chapter 3.4.3* (pp. 1–26). Dordrecht: Kluwer Academic Publishers.
- Ren, X. Z., Wei, G., Qi, Q. S., & Fang, Z. D. (1981). Comparative studies of isolates of *Pseudomonas solanacearum* Smith from different host plants. *Acta Phytopathologica Sinica*, 11, 1–8.
- Spratt, B. G., Hanage, W. P., Li, B., Aanensen, D. M., & Feil, E. J. (2004). Displaying the relatedness among isolates of bacterial species - the eBURST approach. *FEMS Microbiology Letters*, 241(2), 129–34.
- Taghavi, M., Hayward, C., Sly, L. I., & Fegan, M. (1996). Analysis of the phylogenetic relationships of strains of *Burkholderia solanacearum*, *Pseudomonas syzygii*, and the Blood Disease Bacterium of banana based on 16S rRNA gene sequences. *International Journal of Systematic Bacteriology*, 46, 10–15.
- Titatarn, V. (1986). Bacterial wilt in Thailand Bacterial wilt disease in Asia and the South Pacific. *ACIAR Proceedings* ACIAR, Canberra, Australia, 13, 64–67.
- Tsuchiya, K., Yano, K., Horita, M., Morita, Y., Kawada, Y., & d'Ursel, C. M. (2005). Occurrence and epidemic adaptation of new strains of *Ralstonia solanacearum* associated with *Zingiberaceae* plants under agro-ecosystem in Japan. In C. Allen, P. Prior, & A. C. Hayward (Eds.), *Bacterial wilt disease and the Ralstonia solanacearum species complex* (pp. 463–469). APS Press: St. Paul.
- Velupillai, M. (1986). Bacterial wilt in Sri Lanka. Bacterial wilt disease in Asia and the South Pacific. *ACIAR Proceedings*, ACIAR, Canberra, Australia, 13, 57–64.
- Zehr, E. I. (1970). Cultural, physiological and biochemical properties of isolates to Philippine *Pseudomonas solanacearum*. *Philippine Phytopathology*, 6, 29–43.