

## ADVENTITIOUS SHOOTS FROM AERIAL STEM OF GINGER

Dr. B Sasikumar

Senior Scientist

Indian Institute of Spices Research

P O Marikunnu, Kozhikode – 673013, Kerala.

E Mail: bhaskaransasikumar@yahoo.com

**G**inger (*Zingiber officinale* R.) is characterized by below ground rhizome and above ground aerial stem (pseudostem). The aerial stem in ginger is represented by erect growing tillers or leafy shoots with 10 – 12 leaves reaching a height of 60 – 80 cm tall. As typical to many monocots, the leafy shoots do not produce any adventitious shoots *in planta* through under *in vitro* conditions direct plantlet formation from aerial stem is observed

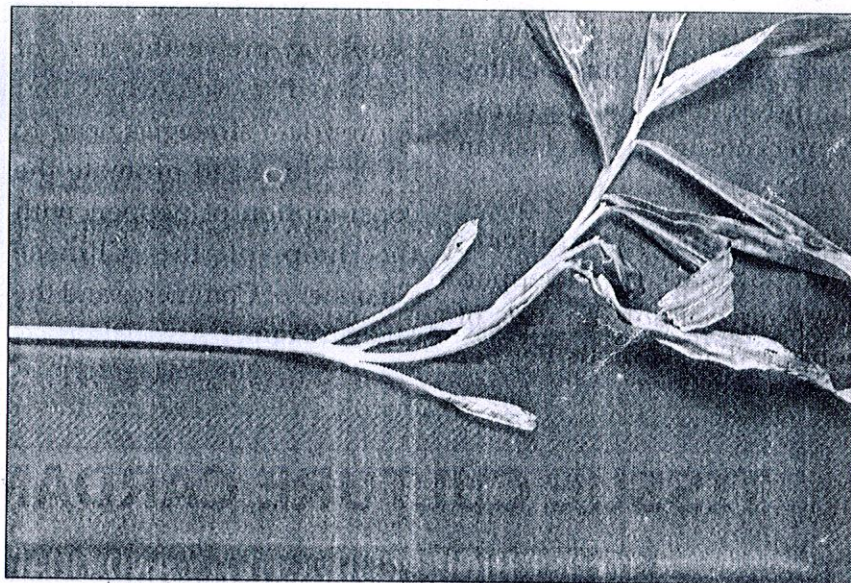


Fig. 1 Adventitious shoots from aerial stem of ginger

However, recently we came across a rare case of adventitious shoot development from aerial shoot

of a stressed ginger plant (Fig. 1). The change in the endogenous levels of hormones

of the tiller due to the stress would have triggered the adventitious branching.

### FICCI SHOW FOR MARKETING NETWORK

The FICCI is organizing the 2nd International Exhibition for processed food and beverage industry named as 'Annapoorna - World of Food India 2006'. This is scheduled to be held at the Bombay Exhibition Centre, Mumbai during 1st to 3rd

November, 2006. This exhibition held in 2004 had participation of 83 companies from 10 countries and had good visitor turn out. This year's show will showcase expertise and networking with supermarkets, food retail chains, departmental stores,

grocery and convenience stores, hotels, clubs and resorts, airlines, importers and exporters etc. More details can be had from FICCI, Federation house, Tansen Marg, New Delhi 110 001, Tel : 011 23738760, Fax : 011 23320714, E-mail : ficci@ficci.com